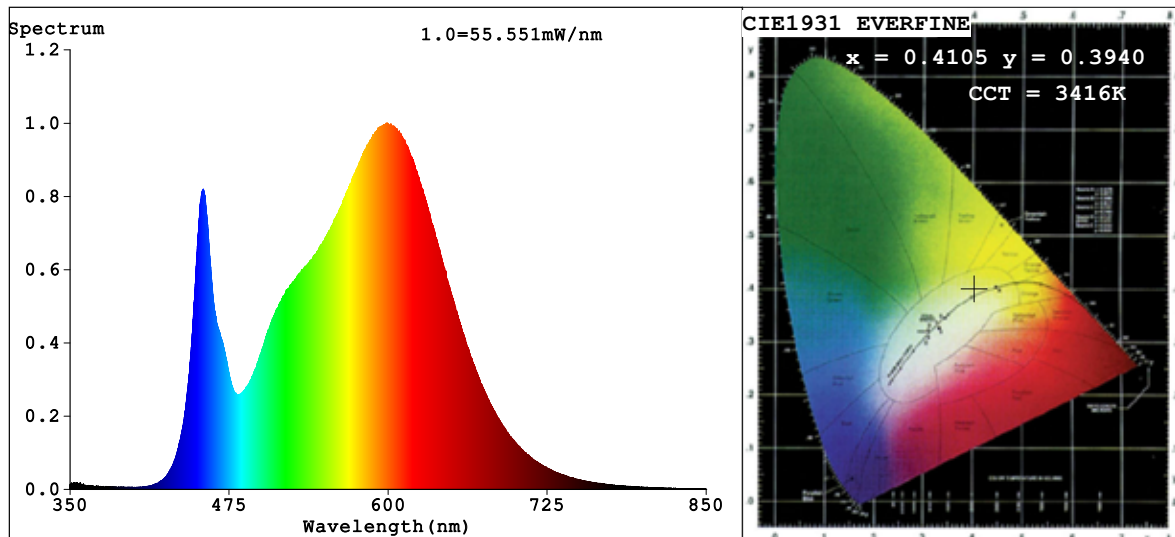


Spectrum Test Report



Color Parameters:

Chromaticity Coordinate: $x=0.4105$ $y=0.3940$ $u'=0.2377$ $v'=0.5134$
 CCT=3416K(Duv=0.0003) Dominant WL:Ld =581.0nm Purity=41.5%
 Ratio:R=20.6% G=76.1% B=3.2%; Peak WL:Lp=599.6nm FWHM=139.1nm
 Render Index:Ra=82.9 CRI=76.9 TM30:Rf=82 Rg=94
 R1 =82 R2 =92 R3 =96 R4 =80 R5 =81 R6 =89 R7 =83
 R8 =60 R9 =7 R10=80 R11=79 R12=65 R13=84 R14=99 R15=74

Photo Parameters:

Flux = 2909 lm Eff. : 135.15 lm/W Fe = 8.752 W

Electrical parameters:

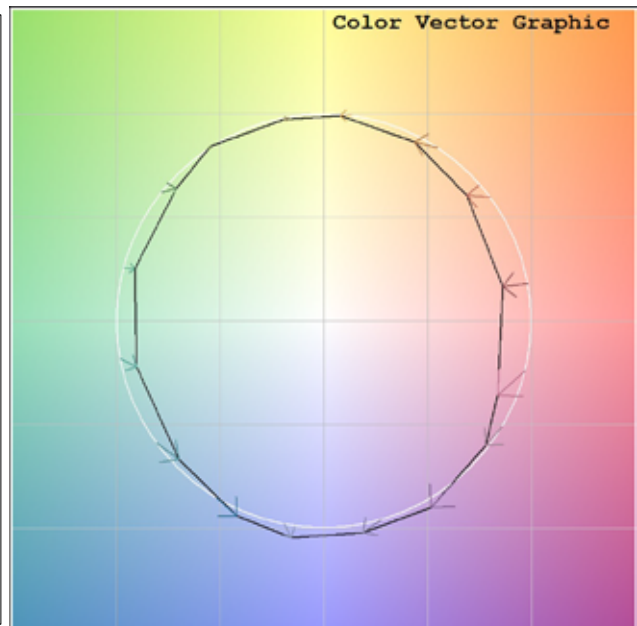
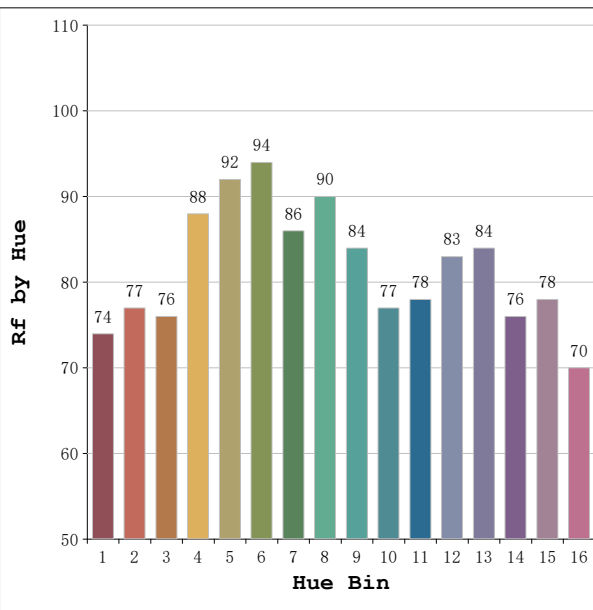
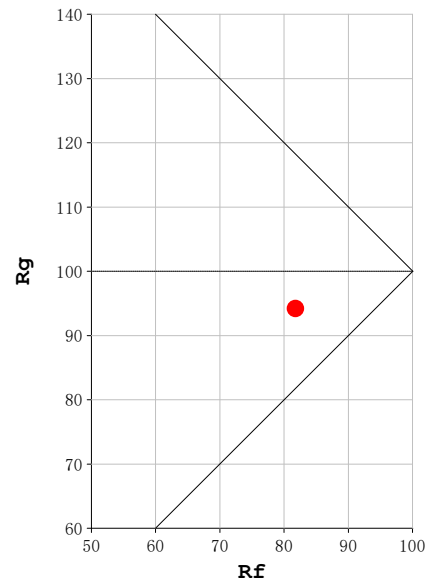
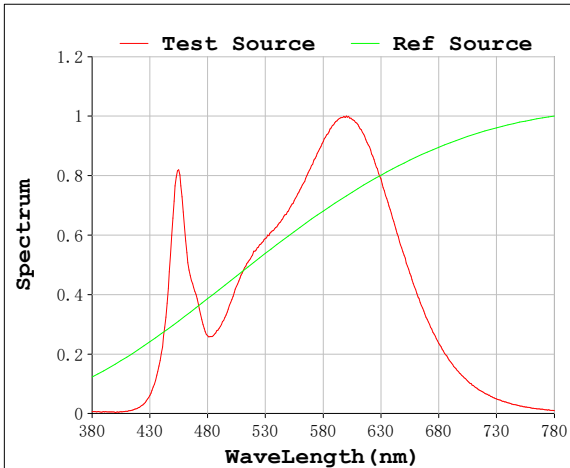
V = 23.998 V I = 0.8969 A P = 21.52 W PF = 1.000

Status: Integral T = 453 ms Ip = 50736 (77%)

Model:Ecoled Elite 20 3500K
 Tester:MªAngeles
 Temperature:25Deg
 Manufacturer:Luz Negra

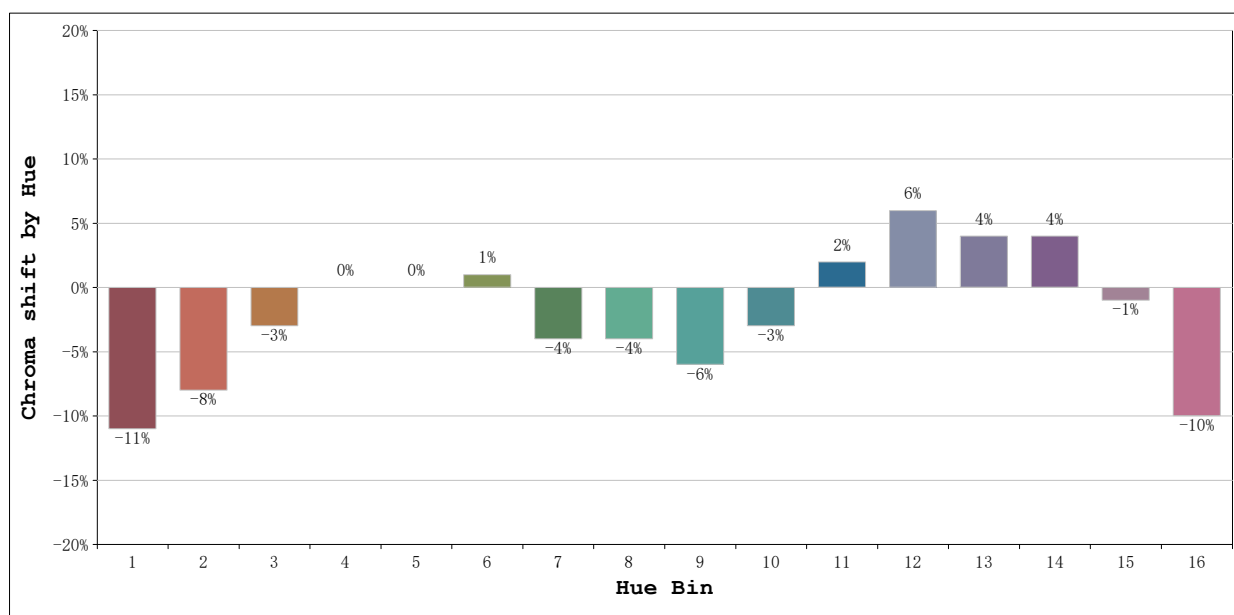
Number: 31.211
 Date:2025-06-02 10:22:40
 Humidity:40%
 Remarks:100cm tira flexible

Rf: 82 **CCT: 3416 K** **u': 0.2377**
Rg: 94 **Duv: 0.0003** **v': 0.5134**



Model:Ecoled Elite 20 3500K
Tester:MªAngeles
Temperature:25Deg
Manufacturer:Luz Negra

Number: 31.211
Date:2025-06-02 10:22:40
Humidity:40%
Remarks:100cm tira flexible



			Graphic shift(%)	
Hue Bin	Hue Angle	Rf	Chroma	Hue
1	0.0° - 22.5°	74	-11	1
2	22.5° - 45.0°	77	-8	7
3	45.0° - 67.5°	76	-3	11
4	67.5° - 90.0°	88	0	5
5	90.0° - 112.5°	92	0	3
6	112.5° - 135.0°	94	1	0
7	135.0° - 157.5°	86	-4	-4
8	157.5° - 180.0°	90	-4	0
9	180.0° - 202.5°	84	-6	5
10	202.5° - 225.0°	77	-3	12
11	225.0° - 247.5°	78	2	13
12	247.5° - 270.0°	83	6	5
13	270.0° - 292.5°	84	4	-8
14	292.5° - 315.0°	76	4	-15
15	315.0° - 337.5°	78	-1	-11
16	337.5° - 360.0°	70	-10	-13

Model:Ecoled Elite 20 3500K
 Tester:MªAngeles
 Temperature:25Deg
 Manufacturer:Luz Negra

Number: 31.211
 Date:2025-06-02 10:22:40
 Humidity:40%
 Remarks:100cm tira flexible